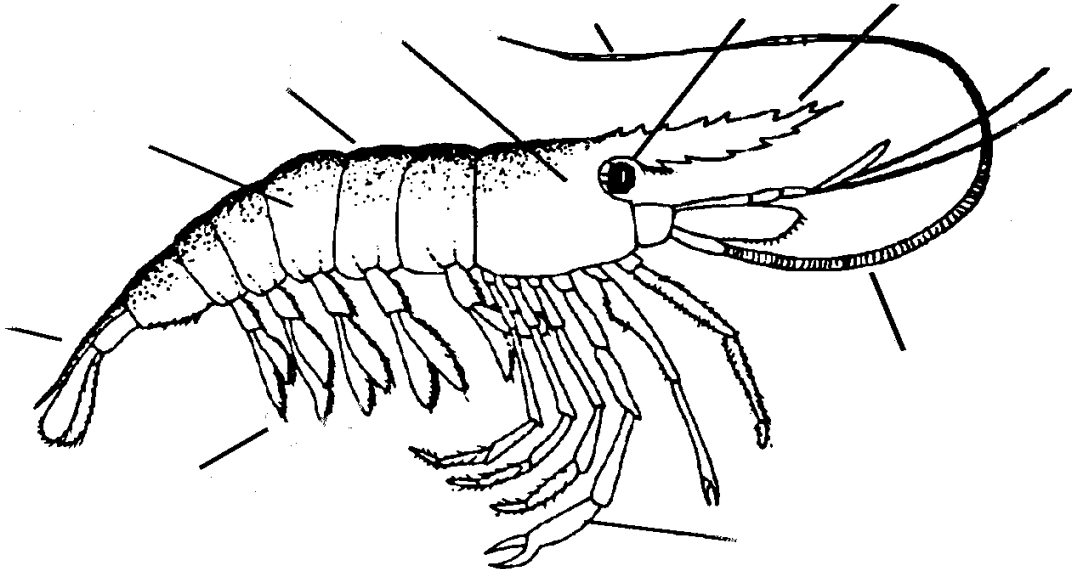


Questions and diagram of a shrimp

DIAGRAM 1

Label the parts:



GUIDE QUESTIONS

1. How many swimming legs are there? _____ What colour are they? _____
2. How many walking legs are there? _____ What colour are they? _____
3. How many antennae are there? _____ What colour are they? _____
4. How many segments are there along abdomen? _____
5. Is the head fused? _____
6. What colour are the following?
 - ♦ the tail? _____
 - ♦ the mouthparts? _____
 - ♦ the eye? _____
7. Describe the inside of the mouth.
 - Are there any bones? _____
 - Are there any teeth? _____

8. Look for and DRAW below:

- the stomach, heart, intestines, brain and eye.

IF A MICROSCOPE IS AVAILABLE:

Look at samples of each of the five organs (in 8) under a microscope and draw what you see on another page or in your log book.

What detail do you see that you could not see with the unaided eye?

